

114

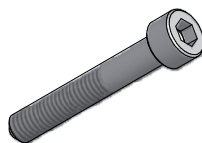
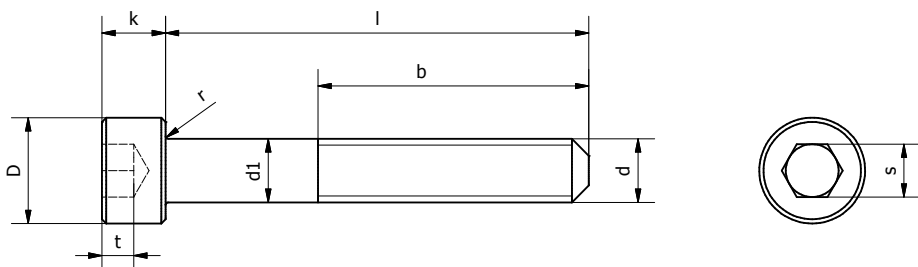
COD.



TCEI

- ✓ DIN 912
- ✓ ISO 4762
- ✓ UNI 5931

VITI A TESTA CILINDRICA CAVA ESAGONALE HEXAGON SOCKET HEAD CAP SCREWS ZYLINDERSCHRAUBEN MIT INNENSECHSKANT VIS A TETE CYLINDRIQUE A SIX PANS CREUX



Dimensions in mm

d Filetto/Thread	M3	M4	M5	M6	M8	M10	M12	M14	M16	M20
b	18	20	22	24	28	32	36	40	44	A RICHIESTA ON DEMAND
d1 nom.	3	4	5	6	8	10	12	14	16	
D	5,5	7	8,5	10	13	16	18	21	24	
k	3	4	5	6	8	10	12	14	16	
s nom	2,5	3	4	5	6	8	10	12	14	
t utile	1,3	2	2,5	3	4	5	6	7	8	
r	0,1	0,2	0,2	0,25	0,4	0,4	0,6	0,6	0,6	
l max	30	50	60	140	140	140	140	140	140	

CODE EXAMPLE:

114 + material + diam + thread + length + color

TCEI M6x20 Al7075 white = 114106020B